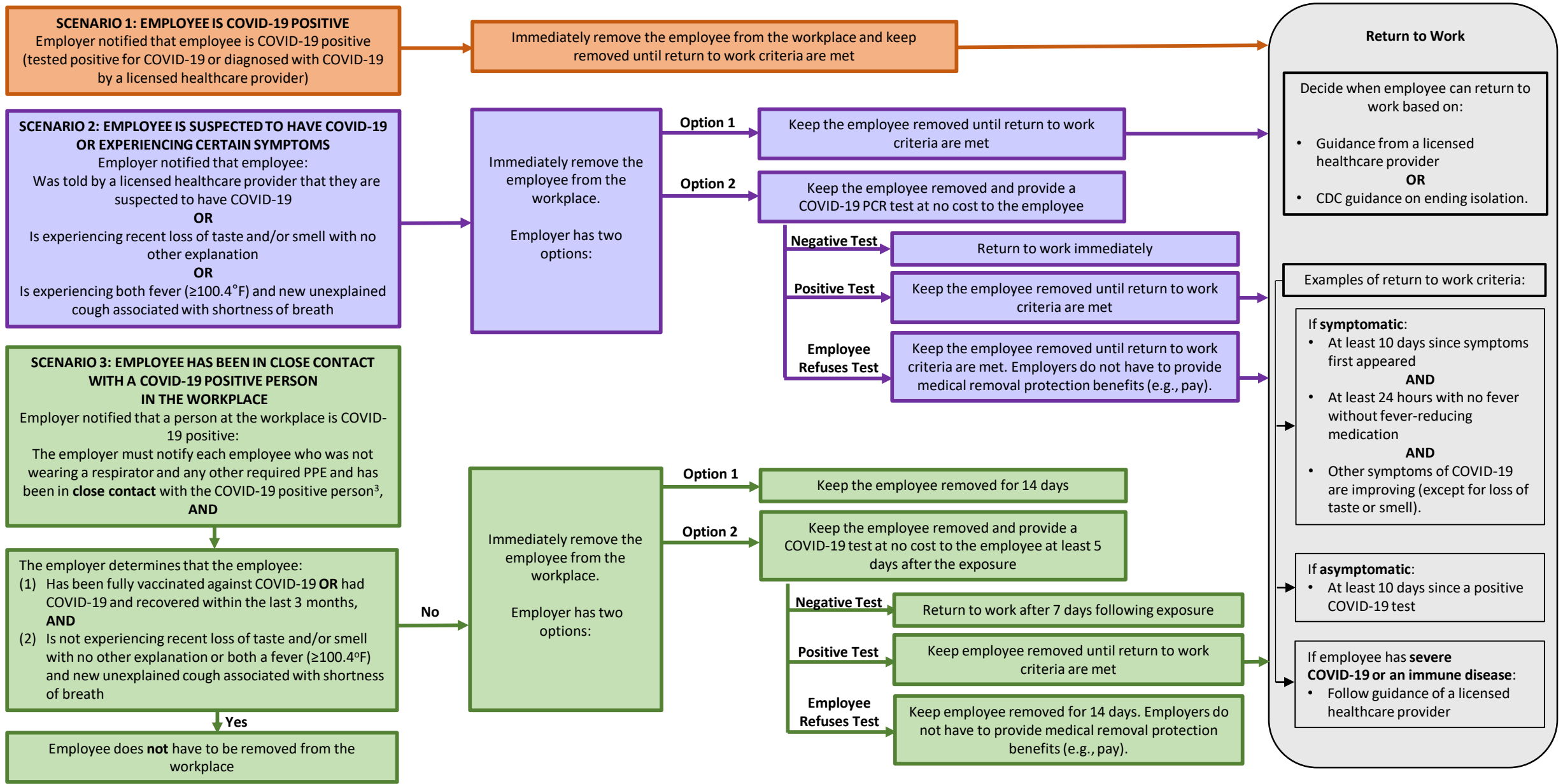


ETS Compliance Guidance for Employers – Paid¹ Medical Removal of Employees and Return to Work

This flow chart explains the steps that employers must take when notified that an employee is COVID-19 positive, told by a licensed healthcare provider that they are suspected to have COVID-19 or is experiencing certain COVID-19 symptoms, or has been in close contact with a COVID-19 positive person in the workplace.²



¹ OSHA is requiring medical removal protection benefits to be paid only by employers that have more than 10 employees.

² Employers may choose to remove or test employees for other COVID-19-related reasons not required by the ETS (e.g., additional symptoms from the CDC list or exposure to someone who is COVID-19 positive outside the workplace).

³ This notification provision is not triggered by the presence of a patient with confirmed COVID-19 in a workplace where services are normally provided to suspected or confirmed COVID-19 patients (e.g., emergency rooms, urgent care facilities).