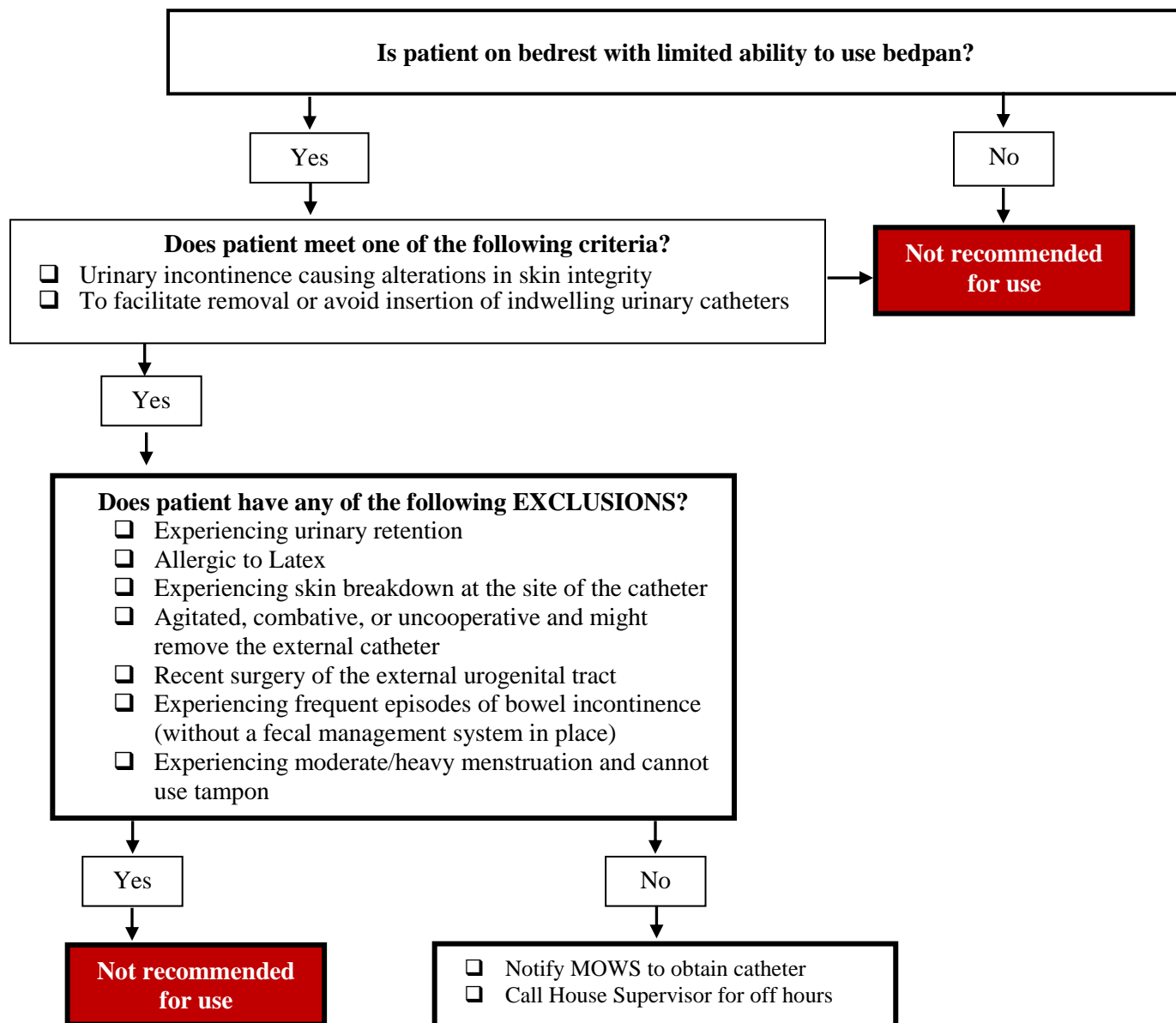


Algorithm for Using External Female Urinary Catheter



Nurse Care Tips

- Assess patient's skin and perform perineal care prior to placement of each external female catheter
- Replace the catheter every 12 hours or when soiled
- Ensure the catheter remains in the correct position after turning and remove prior to ambulation
- Place to 40 mmHg continuous suction
- Change suction canister and tubing every 24 hours
- Do not use barrier cream on perineum when catheter is in use