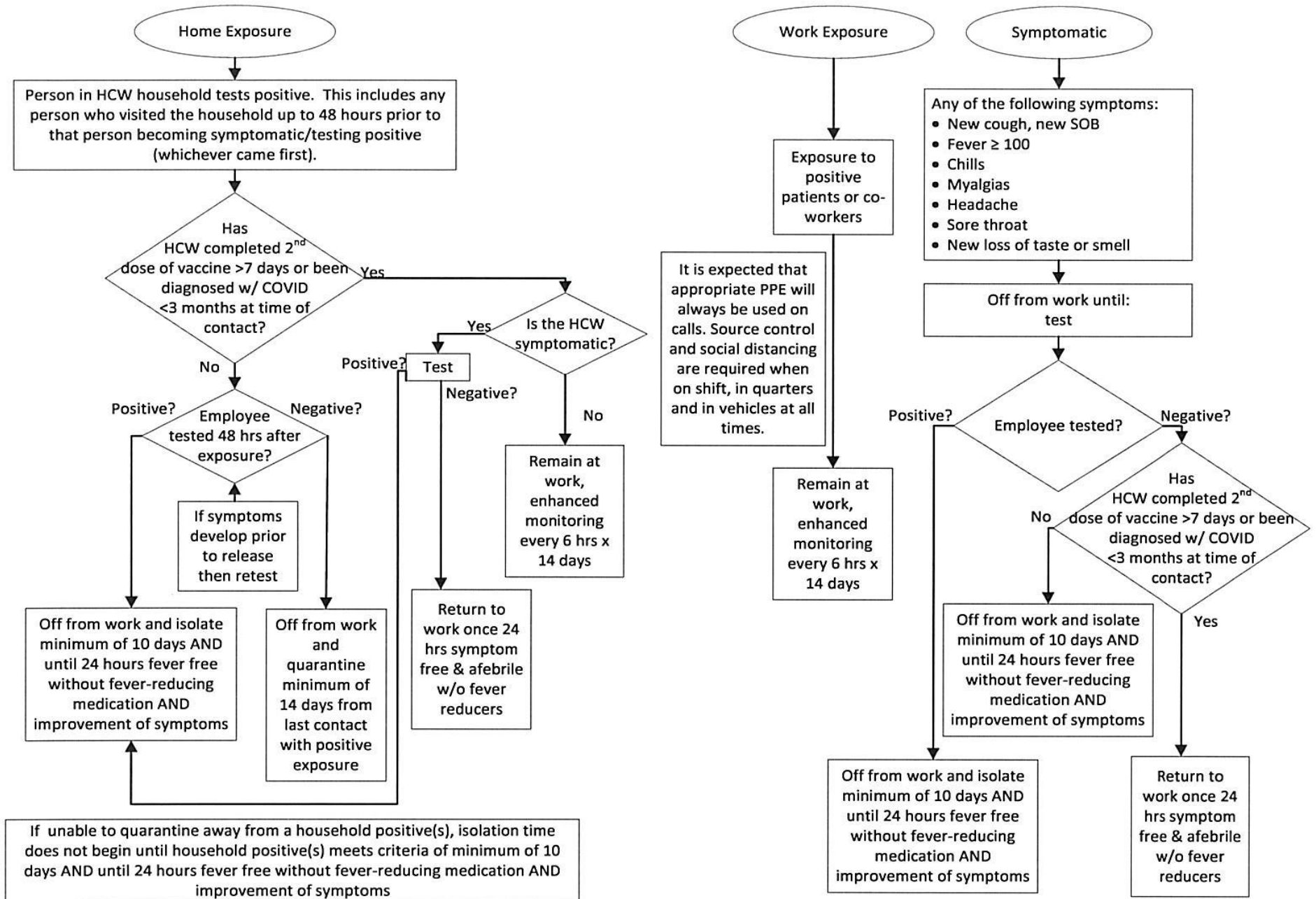


# Post Vaccine Crisis Staffing Model for Healthcare Workers



# Post Vaccine Crisis Staffing Model for Healthcare Workers

The above model can supersede the 11-16-20 Return to Work Algorithm based on the expectations that agencies adhere to PPE on all calls, social distancing and source control within stations and vehicles and enhanced monitoring following workplace exposures. **Testing is only recommended after home exposure or if symptomatic.**

## References:

1-CDC Criteria for Return to Work for Healthcare Personnel with Suspected or Confirmed COVID-19 (Interim Guidance). Updated May 5, 2020. <https://www.cdc.gov/coronavirus/2019-ncov/hcp/return-to-work.html> 2-CDC Interim U.S. Guidance for Risk Assessment and Work Restrictions for Healthcare Personnel with Potential Exposure to COVID-19. Updated June 18, 2020. <https://www.cdc.gov/coronavirus/2019-ncov/hcp/guidance-risk-assessment-hcp.html> 3-DC Interim Infection Prevention and Control Recommendation for Healthcare Personnel During the Coronavirus Disease 2019 (COVID-19) Pandemic. Updated July 9, 2020. <https://www.cdc.gov/coronavirus/2019-ncov/hcp/infection-control-recommendations.html> 4-CDC FAQ for Aerosol generating procedures. [https://www.cdc.gov/coronavirus/2019-ncov/hcp/faq.html?CDC\\_AA\\_refVal=https%3A%2F%2Fwww.cdc.gov%2Fcoronavirus%2F2019-ncov%2Fhcp%2Finfection-control-faq.html#Transmission](https://www.cdc.gov/coronavirus/2019-ncov/hcp/faq.html?CDC_AA_refVal=https%3A%2F%2Fwww.cdc.gov%2Fcoronavirus%2F2019-ncov%2Fhcp%2Finfection-control-faq.html#Transmission) 5-CDC Strategies to Mitigate Healthcare Personnel Staffing Shortages. Updated April 30, 2020. <https://www.cdc.gov/coronavirus/2019-ncov/hcp/mitigating-staff-shortages> 6-CDC Interim Clinical Guidance for Management of Patients with Confirmed Coronavirus Disease (COVID-19). Updated June 30, 2020. <https://www.cdc.gov/coronavirus/2019-ncov/hcp/clinical-guidance-management-patients.html> 7-CDC Strategies to Mitigate Healthcare Personnel Staffing Shortages. Updated April 30, 2020. <https://www.cdc.gov/coronavirus/2019-ncov/hcp/mitigating-staff-shortages> 8-CDC Strategies to Mitigate Healthcare Personnel Staffing Shortages. Updated July 17, 2020. <https://www.cdc.gov/coronavirus/2019-ncov/hcp/mitigating-staff-shortages> 9-CDC Implementing Safety Practices for Critical Infrastructure Workers Who May Have Had Exposure to a Person with Suspected or Confirmed COVID-19. Updated September 11, 2020. <https://www.cdc.gov/coronavirus/2019-ncov/community/critical-workers/implementing-safety-practices.html> 10- Safety and Efficacy of the BNT162b2 mRNA COVID-19 Vaccine. Updated December 31, 2020. <https://www.nejm.org/doi/full/10.1056/NEJMoa2034577>