



2015–2018

Christian County  
Community Health Needs Assessment

**TAYLORVILLE**  
**Memorial**   
H O S P I T A L

A Memorial Health System Affiliate



## Christian County, Illinois 2015 COMMUNITY HEALTH NEED ASSESSMENT

### Contents

Executive Summary	2
Introduction to Memorial Health System	3
Introduction to Taylorville Memorial Hospital	4
Introduction to Christian County	4
Outcomes of 2012 CHNA	5
Memorial Health System Leadership	6
2015 CHNA Process	8
FY2016 CHNA Implementation Strategy	20

*This report was completed in September 2015 and posted online at  
<http://www.choosememorial.org/MHS-Community-Need-Assessment>.*

## Executive Summary

In 2015, Taylorville Memorial Hospital completed a community health need assessment (CHNA) for Christian County, Ill., as required of nonprofit hospitals by the Affordable Care Act of 2010. The hospital completed a previous need assessment in 2012.

As an affiliate of Memorial Health System, Taylorville Memorial Hospital (TMH) worked with other affiliate hospitals on the overall timeline and process steps for the CHNA, but completed the assessment independently in collaboration with its local community partners.

In order to help narrow down the multiple needs and issues facing the community to a set of final priorities the hospital would address, Memorial Health System (MHS) hospitals agreed to use the same defining criteria throughout the assessment process. These defining criteria are:

1. Institute of Medicine Triple Aim Impact:
  - Improve the Care of Individuals
  - Improve the Health of Populations
  - Reduce Waste, Variation and Cost
2. Magnitude of the Issue – How wide an issue is this in the community?
3. Seriousness of the Issue – How related is the issue to the mortality (deaths) of those affected?
4. Feasibility – Considering available resources to address the issue, how likely are we to make a significant impact on the issue?

The CHNA included reviewing secondary data on health and socioeconomic indicators for Christian County, primarily through Healthy Communities Partnership data on the hospital's website. Data review also included the Illinois Project for Local Assessment of Need, completed by the Christian County Department of Public Health. The health department also served on the Core Team to review data.

TMH convened a community advisory committee to review data, offer additional insights in issues affecting the community, and rank the priorities using the defined criteria.

Final priorities selected are:

1. Obesity
2. Mental Health
3. Pediatric Dental

In addition, Memorial Health System convened an Internal Advisory Team to review common priorities identified in all four counties where MHS hospitals completed community health need assessments. Two goals from a system-wide perspective are included in the FY2016 implementation strategy.

The Taylorville Memorial Hospital board approved the FY2016 implementation strategy on July 14, 2015. The strategy will be updated for fiscal years 2017 and 2018.

## Introduction to Memorial Health System

One of the leading healthcare organizations in Illinois, Memorial Health System of Springfield is a community-based, not-for-profit corporation dedicated to patient care, education and research.

Our more than 6,700 staff members, partnering physicians and hundreds of volunteers are dedicated to improving the health of the communities we have served since 1897. In a year, we serve an average of more than 40,000 inpatients, more than 667,000 outpatients and more than 125,000 patients in our four Emergency Departments. Our highly skilled team has a passion for excellence and is dedicated to providing a great patient experience for every patient every time.

Memorial Health System includes four hospitals: Taylorville Memorial Hospital in Christian County, Memorial Medical Center in Sangamon County, Abraham Lincoln Memorial Hospital in Logan County and Passavant Area Hospital in Morgan County. Memorial Health System also includes Mental Health Centers of Central Illinois, Memorial Physician Services and Memorial Home Services.

Community health need assessments (CHNAs) were completed in 2015 in each of the counties where the hospitals are located. These need assessments meet the federal health reform's Section 9007 of the Patient Protection and Affordable Care Act of March 2010 and requirements of the IRS 990 Schedule H report. Memorial Health System hospitals also completed need assessments in 2012.

**Our Mission** To improve the health of the people and communities we serve.

**Our Vision** To be a national leader for excellence in patient care.

### Our Values

**S**ervice to Humanity To care for life's precious gift of health is a calling of the highest order. We recognize the vulnerability that accompanies fear and hope. We accept the responsibility, entrusted to us every day, to serve humanity.

**E**xcellence in Performance By bringing together talented, dedicated people and advanced technology, we strive to provide quality healthcare. We take pride in ourselves, our colleagues and our workplace. We demonstrate that pride in the quality of service we deliver each day.

**R**espect for the Individual We treat all people with dignity, respect and compassion. We believe that every person is unique and has the right to participate in decisions that affect them.

**V**alue of Employees More than buildings and equipment, people are Memorial Health System. Our success depends on an atmosphere of fairness and mutual respect. We are committed to provide equal opportunity for employment, growth and advancement. Furthermore, all employees are provided the opportunity to make a meaningful contribution to the fulfillment of our mission and are recognized for their accomplishments.

**I**ntegrity in Relationships We are committed to fairness and honesty in all of our relationships. We recognize that our ability to sustain relationships based on mutual trust is the foundation of our success.

**C**ommunity Responsibility We hold our assets in public trust and recognize that continued financial viability is essential to fulfill our mission within the context of this statement of values. We believe that our community service obligation can best be met as a not-for-profit organization. Furthermore, we accept the responsibility to support research, education and public service programs that enrich the quality of life in our community.

**E**qual Access We believe all people deserve equal access to care and services. In our pursuit of this belief, we are constrained by our financial resources. We must balance our commitment to provide equal access to care and services with our obligation to ensure the continuing availability of quality healthcare for the future.



## Introduction to Taylorville Memorial Hospital

Taylorville Memorial Hospital (TMH) is a not-for-profit rural critical access hospital located in Taylorville, Illinois. TMH was established in 1906 by the Adorers of the Blood of Christ and has served the citizens of Christian County for over 108 years. TMH operates a 25-bed acute medical/surgical inpatient unit. A wide range of outpatient services are offered at TMH including:

- Surgery
- Physical, occupational and speech therapy services
- Cardiac and pulmonary rehabilitation
- Advanced diagnostic imaging
- Comprehensive emergency services, 24-hours a day

TMH is fully accredited by The Joint Commission and is a member of the American Hospital Association, the Illinois Hospital Association and Voluntary Hospitals of America (VHA). TMH has been designated as an Emergent Stroke Ready Hospital by Illinois Department of Public Health. In order to qualify for this designation a hospital has to have the knowledge and resources to emergently care for a stroke patient 24 hours a day, 7 days a week.

In 2015, TMH was recognized as one of the 2015 America's Best Hospitals for Emergency Care by the Women's Choice Award based in Hollywood, Florida. The award is based on publicly available data from CMS, patient recommendation and satisfaction scores and a national survey of women's priorities when making health choices.

In FY2014, TMH provided the following care to the community:

Patient Days of Care: 4,180

Discharges: 1,174

Outpatient Visits: 36,971

As a nonprofit community hospital, TMH provides millions of dollars in community support each year, both for its patients and in and support for community partnerships. For the past three years, TMH's community benefits have totaled \$14.2 million. (FY15 totals were not available at the time of this report's completion.)

## Introduction to Christian County, Illinois

Taylorville Memorial Hospital is located in Taylorville, Illinois near the center of the state and 27 miles southeast of the state capitol of Springfield. With a population of 33,892, Christian County is largely rural and agricultural, with corn and soybeans the primary products. Over 20 manufacturing companies are located in the county.

The majority of the patients served by TMH come from Christian County, where the hospital focuses the majority of our community outreach efforts and health improvement initiatives. The hospital employs 351 people, and as one of the major employers in Christian County these jobs directly impact our local economy by increasing consumer spending and by stimulating economic growth.

Christian County's residents are 96.5% white, 1.6% black, 1.5% Hispanic/Latino and .6% Asian. The median household income is \$45,145 and 14.9% of people live below the federal poverty level, including 24.8% of children and 7.9% of seniors. The county has an aging population, with 18.2% of residents age 65 or older, compared to 13.5% for the remainder of the state. 21.5% of the population is under the age of 18. 88.2% of persons age 25 and over are high school graduates or higher.

Although 57% of the Christian County's population lives in an urban setting and 43% of the population lives in a rural setting, the largest urban setting is the town of Taylorville (population 10,971), which is also the county seat. Taylorville also contains a municipal airport and a Lincoln Land Community College education center.

Other health care resources in Christian County include Pana Community Hospital, a rural critical access hospital in the southeast corner of the county, 17 miles from Taylorville. Additional health care resources include Springfield Clinic primary care physicians, Christian County Department of Public Health and Christian County Mental Health Association. Also in Christian County, there are seven dental offices with approximately 11 dentists. Of these 11 dentists, one accepts Public Aid patients and approximately two accept Public Aid on established patients only.

During the 2012 CHNA process, Taylorville Memorial Hospital collaborated closely with two

## Outcomes of the 2012 Community Health Need Assessment

other Memorial Health System hospitals. Memorial Medical Center, located in Sangamon County, is adjacent to Christian County. Abraham Lincoln Memorial Hospital, also a rural critical access hospital, is in Logan County. All three hospitals selected the following four priorities:

1. Access to Care
2. Cardiovascular Disease
3. Diabetes
4. Obesity

Taylorville Memorial Hospital addressed these priorities in a variety of ways throughout FY13-FY15.

### Outcomes of 2012 Community Health Need Assessment Plan

PRIORITY: ACCESS TO CARE	
TMH will provide care to people regardless of ability to pay in accordance with Taylorville Memorial Hospital's charity care policy.	<ul style="list-style-type: none"> <li>• Provide medically necessary care to all patients, regardless of ability to pay; provide charity care as needed and in accordance with the hospital's policy. Taylorville Memorial Hospital provided \$1.7 million in charity care in FY13 and \$1.3 million in FY14. (FY15 totals were not yet available when this document was completed.)</li> </ul>
TMH will provide financial support for the cost of transportation to and from the facility for indigent patients who require treatment at TMH.	<ul style="list-style-type: none"> <li>• In FY14, Taylorville Memorial Hospital provided approximately \$400 worth of cab fare to transport patients to and from TMH.</li> </ul>

PRIORITY: ACCESS TO CARE	
TMH will increase the supply of trained health care professionals.	<ul style="list-style-type: none"> <li>From FY13 through FY15, Taylorville Memorial Hospital served as a clinical site for Lincoln Land Community College nursing students and Capital Area School nursing students. Within this time frame, TMH provided clinical experiences for more than 200 students.</li> </ul>
TMH will operate as a Critical Access Hospital.	<ul style="list-style-type: none"> <li>TMH offers all people access to 24/7 emergency care services.</li> </ul>
PRIORITY: CARDIOVASCULAR DISEASE	
TMH will provide classes of ACLS or PALS education for area firefighters, EMTs and paramedics.	<ul style="list-style-type: none"> <li>TMH held at least 2 PALS or ACLS education classes each year from FY13 through FY15.</li> </ul>
TMH will offer community blood pressure screenings.	<ul style="list-style-type: none"> <li>Taylorville Memorial Hospital offers many health screenings in the community. Besides blood pressure screenings, TMH also offers blood glucose testing at these screenings. Community members are educated and advised to follow up with their physician when results are not favorable.</li> </ul>
PRIORITY: DIABETES	
Taylorville Memorial Hospital will sponsor bi-monthly meetings of the Living with Diabetes support group.	<ul style="list-style-type: none"> <li>TMH Living with Diabetes support group offers education and discussion on numerous topics relating to diabetes. TMH participates in numerous community events and health fairs annually to offer diabetes screenings and education.</li> </ul>
PRIORITY: OBESITY	
TMH will host 3 community-wide Lose-to-Win sessions a year.	<ul style="list-style-type: none"> <li>Taylorville Memorial Hospital has been instrumental in helping many community members lose weight. The total weight loss since the onset of the program is 42,975.2 lbs.</li> </ul>

## Memorial Health System Leadership of Community Benefit & CHNA

Memorial Health System has an appointed board committee that oversees the health system’s community benefits as well as the community health need assessment. This committee, made up of board members, community representatives and senior leadership, approves and oversees all aspects of Memorial’s community benefit programs and community health need assessments.

Community benefit and outcomes of the hospital community health need assessments are included in the Memorial Healthy System Strategic Plan, which contains five goals:

1. Great Patient Outcomes
2. Great Place to Work



3. Great Partner for Physicians
4. Great Regional Presence
5. Great Financial Stewardship
  - Under the final goal of Great Financial Stewardship, all MHS affiliates are responsible to “Achieve 100% of approved Community Benefit targets.”

The MHS Board’s Community Benefit Committee oversight includes:

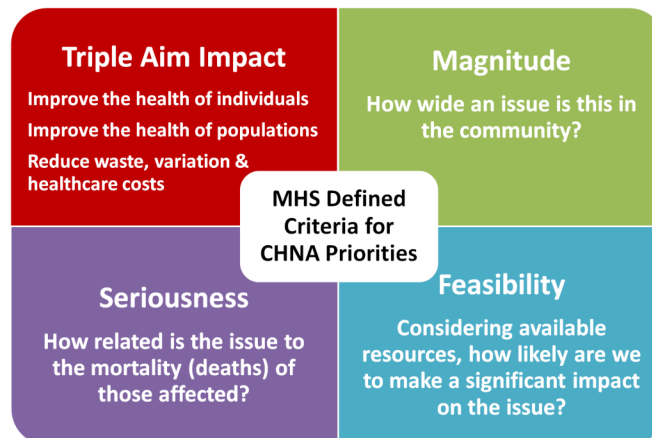
- MHS charity care policies
- Tri-annual community health need assessment processes for the four MHS hospitals
- Annual review and approval of CHNA strategies/community benefit plans for the four MHS hospitals
- Annual review of measures of success in meeting the goals of the CHNA strategies.

During the 2015 CHNA process, the four MHS hospitals followed the timeline below, and MHS Community Benefit Committee was apprised of progress throughout the process.



Following completion of its 2015 CHNA, TMH submitted its implementation strategy to the board of Taylorville Memorial Hospital, which approved the strategy on July 14, 2015.

Because hospitals cannot address every identified community health need, Memorial Health System hospitals also discussed criteria to use when narrowing down the priorities during the CHNA process. They determined to use four criteria for selection of priorities: whether the priority would demonstrate an impact on the Institute of Medicine’s Triple Aim; the magnitude of the issues; the seriousness of the issue; and the feasibility of addressing the issue.





## 2015 CHNA Process

The Christian County CHNA process was completed according to the sequence and timeline that follows:

Timeline	Activity
<b>September/October 2014</b>	<ul style="list-style-type: none"> <li>• Obtained county-specific data from Healthy Communities Institute</li> <li>• Reviewed existing need assessment</li> <li>• Convened Internal Advisory Group</li> </ul>
<b>November 2014- January 2015</b>	<ul style="list-style-type: none"> <li>• Convened External Advisory Group to review secondary data and narrow priorities to top 8</li> <li>• Reconvened External Advisory Group to complete survey on community assets and gaps on top 8 priorities</li> <li>• Reconvened Internal Advisory committee for final review and recommendations</li> </ul>
<b>January 2015</b>	Finalized the top three priorities
<b>Spring-Summer 2015</b>	Worked on priority implementation plan Developed and finalized FY 16 Implementation Plan Gained TMH Board Approval of FY 16 Implementation Plan in July
<b>September 2015</b>	Posted CHNA process and FY 16 Implementation Plan on TMH website

### Data Review

Since 2011, Memorial Health System has contracted with Healthy Communities Institute in Berkeley, Cal., to obtain community health and social determinant indicators specific to Christian County, as well as the three other counties that are home to MHS hospitals. The data is available on the hospital's website for all in the community to use. It includes information from national resources, including Healthy People 2020, state resources, and local hospital utilization data. The Healthy Communities Institute data played a major role in examining and narrowing down significant health issues affecting Christian County during the 2015 CHNA process.

Additional secondary data was obtained from Christian County Health Department Illinois Project for Local Assessment of Need (IPLAN)

Taylorville Memorial Hospital does not face any information gaps that limit the ability to assess all of the community's health needs.

## Core Team

Taylorville Memorial Hospital's Core Team met on October 17, 2014. The Core Team consisted of:

- Dan Raab, CEO, Taylorville Memorial Hospital
- Tracy Seaton, Director of Nursing, Taylorville Memorial Hospital
- Cheryl Fahl, PR Specialist, Taylorville Memorial Hospital
- Nancy Martin, Director, Christian County Health Department

The Core Team first reviewed the information and statistics from the Healthy Communities website by delving into all of the indicators that were in red or yellow, indicating the indicator was a higher risk or worse outcome than green indicators. The Core Team then reviewed the Christian County Health Department IPLAN. The discussion of the IPLAN was led by Nancy Martin, Director of the Christian County Health Department. The Christian County priorities from the IPLAN are:

Coronary Heart Disease - Coronary Heart Disease is a Health Department priority in Christian County because although the Illinois death rate declined from this disease from 2008 to 2010, the number of deaths increased in Christian County.

Cerebrovascular Disease - Cerebrovascular Disease is a Health Department priority in Christian County because the mortality rates from this disease have been increasing.

Lung Cancer - Lung Cancer is a Health Department priority in Christian County because the annual death rate in the county is above the United States rate.

After reviewing the secondary data, The Core Team had an extensive discussion and compiled a list of the priorities they wanted to present to the External Advisory Committee. This preliminary list of 22 priorities was unanimously agreed upon by the Core Team. The list included, but was not limited to, the top indicators from the Healthy Communities Dashboard and the three priorities from the CCHD IPLAN.

- |  |  |
|--|--|
| 1. Adult Obesity                           | 13. Childhood obesity                        |
| 2. High blood pressure                     | 14. ER visits due to advanced dental disease |
| 3. Lung cancer                             | 15. Access to mental health services         |
| 4. Reduce smoking incidents                | 16. Access to pediatric dental services      |
| 5. Stroke (prevention and early detection) | 17. Heart disease                            |
| 6. Breast cancer                           | 18. ER visits due to mental health           |
| 7. Access to care and health services      | 19. Atrial Fibrillation: Medicare population |
| 8. Colorectal cancer                       | 20. ER rate due to COPD                      |
| 9. Depression: Medicare population         | 21. Asthma                                   |
| 10. Diabetes                               | 22. Fruit and vegetable consumption          |
| 11. Drug abuse                             |  |
| 12. Hospital rate due to hip fracture      |  |

### External Advisory Committee

Taylorville Memorial Hospital convened an External Advisory Group made up of public health and community representatives from Christian County.

	<b>ORGANIZATION DESCRIPTION</b>	<b>SERVES</b>
<b>Christian County Health Department</b>	The mission of the Christian County Health Department is to ensure a safe environment, water and food supply, prevent injury, stop or control the spread of communicable disease and increase personal health. The Christian County Health Department serves a population of 35,000 residents and provides the following services: Women, Infants, and Children (WIC) Program; WIC Breastfeeding Peer Counselor Program; Family Case Management Program; HealthWorks Program; Lead Screening Program; Weekly Immunization Clinics for children and adults; Illinois Breast and Cervical Cancer (IBCCP) Program; Optical Program; Tuberculosis (TB) Program; Communicable Disease Control Program; Illinois Tobacco QuitLine Program; and Public Health Emergency Preparedness Program. The Environmental Health staff provides the following services/enforcement: Food Sanitation Program; Private Sewage Disposal Program; Water Well Program; Tanning and Body Art Inspection Program; and Geothermal Inspection Program. Other services provided include: Blood pressure screenings; seasonal Flu shots; health related information; and referrals.	All county residents including vulnerable/underserved and low-income residents
<b>United Way of Christian County</b>	United Way of Christian County is a non-profit organization serving 28 local member agencies across Christian County. These 28 agencies provide a variety of services to the county. The programs and services offered by these agencies provide relief benefits to those suffering from disaster, medical emergency, physical and mental abuse, depression and illness, youth, teen, adult and family turmoil and provide food to families. The mission at United Way of Christian County is to improve the organized capacity of people to care for one another.	Residents suffering from a variety of issues (includes vulnerable/underserved and low-income residents)
<b>Senior Citizens of Christian County</b>	Senior Citizens of Christian County has been serving seniors for over 37 years. This organization offers senior transportation, both in town and out of town. Trained staff offers seniors and disabled adults assistance with Medicare/Medicaid enrollment/counseling and Medicare Part D. Meals on Wheels, elder fraud and abuse education/prevention (TRIAD), Tax Preparation Assistance, and Legal Services are also services that are offered by the Senior Citizens of Christian County	Area senior citizens
<b>Christian County YMCA</b>	The Christian County YMCA is a values-based, not-for-profit organization that's served the people of Christian County since 1980. The mission of the YMCA is to put Christian principles into practice through programs that build healthy spirit, mind and body for all. The YMCA serves all ages and does not deny services to anyone based on an inability to pay. The facility includes a wellness center, gymnasium, family aquatic center, racquetball courts, general and special needs	All county residents

	<b>ORGANIZATION DESCRIPTION</b>	<b>SERVES</b>
<b>Davis Memorial Christian Church and Taylorville Ministerial Association</b>	The Taylorville Ministerial Association is a ministry of Taylorville congregations working together. The clergy from these congregations meet once a month at TMH to collaborate on the following: Taylorville Food Pantry, Missions for Taylorville, Taylorville Community Garden, Thanksgiving worship, Lenten worship, and Church Family Feud (an annual fundraiser). The Taylorville Ministerial Association provides emergency assistance of food, gas, and lodging for those in need.	Low-income, vulnerable and homeless individuals
<b>Taylorville School District</b>	Taylorville Community Unit School District 3 is a public school district serving 2,555 Pre K thru 12 <sup>th</sup> grade students. The district encompasses 272 square miles and is the 17 <sup>th</sup> largest geographical school district in Illinois. The district serves the communities of Mt. Auburn, Stonington and Taylorville in Christian County. The district's percentage of low income students is 59.52%. The district's percentage of special education students is 16%. The district's operating expense per pupil is \$7,163 is one of lowest in the State and is below the State average of \$12,521 per pupil. The Mission of Taylorville Community Unit School District 3 is to have each student acquire knowledge, skills, and values for life-long learning in a changing world through cooperative efforts of a caring staff, an involved family, and a supportive community.	School-age children
<b>Christian County Mental Health Association</b>	The Christian County Mental Health Association (CCMHA) is a nonprofit citizen's organization that develops, supports, and promotes education and advocacy programs for those with disabilities. The mission of CCMHA is to identify the needs of persons with disabilities in Christian County and to provide high quality, community-based mental health, educational, developmental, residential, rehabilitation, and employment services to support those persons and address their needs.	Residents with mental health needs; particular assistance for low-income and vulnerable individuals

The External Advisory Group met initially on Oct. 28, 2014. The members of the TMH Core Team are included in the Advisory Group and were present at this meeting. The Core Team led the discussion and gave a summary of what was accomplished at the Core Team meeting.

Data from the Healthy Communities website and the IPLAN was again reviewed so all External Advisory Group members could not only see how the list of 22 priorities was comprised, but have input as well. All External Advisory Group members ultimately agreed that the preliminary list of 22 priorities was a list that accurately portrayed the top needs of the community. The Advisory Group then had an extensive discussion on each of the 22 preliminary priorities that focused on the MHS defined criteria of triple aim, magnitude, seriousness, and feasibility in regard to each priority. Members of the Advisory Group, including the Core Team, then completed a forced ranking to help further narrow down the priorities. Each of the 22 preliminary priorities were then ranked on a scale from 1 to 10, with 1 being the least serious, on the impact of Triple Aim, magnitude, seriousness, and feasibility. After the results from the ranking were tallied, the External Advisory Group narrowed the priorities down to eight. They were as follows:

1. Obesity
2. Lung Cancer
3. Breast Cancer
4. Access to pediatric dental services
5. Diabetes
6. Heart disease
7. Access to mental health services
8. Colorectal cancer

The Taylorville Memorial Hospital External Advisory Group met again on December 8, 2014. The top eight priorities were reviewed and the Advisory Group began a discussion in order to prioritize these top needs. The discussion included how each of these priorities connect with the various organizations, what impact these priorities have on the populations the other agencies serve, and the related issues and obstacles that need to be considered in regard to each priority. The External Advisory Group's discussion mostly focused on how TMH's defined criteria of Triple Aim, magnitude, seriousness and feasibility related to each of the eight priorities.

Also at this meeting, the TMH External Advisory Group identified community assets and gaps in detail on each of the top eight priorities to assist in the process of ranking the priorities.

### **Obesity**

#### Assets:

YMCA  
Weight loss groups  
Lose-to-Win  
Health fairs/BMI screening  
Girls on the Run  
Dance schools  
Youth sports programs  
Community garden  
Physical education in schools

#### Gaps:

Challenge of children being a product of their environment  
Healthier foods are more expensive

### **Lung Cancer**

#### Assets:

Low dose CT scanning program at TMH  
Focus on patient smoking cessation  
Quit line promotion  
STAR therapy program for cancer patients



### **Breast Cancer**

#### Assets:

Illinois Breast and Cervical Cancer program  
Digital Mammography  
Taylorville Cups for the Cure  
Christian County Relay for Life  
Relationship with U of I Extension service

### **Access to Pediatric Dental Services**

#### Assets:

Familia Clinic of Springfield  
Capital Community Health Center  
Miles of Smiles (Dr. Trost)  
Decatur Community Health Center

#### Gaps:

Transportation  
Dental coverage is inconsistent  
Accessibility to practices who accept Medicaid  
Tough to find services

### **Diabetes**

#### Assets:

Diabetes support group at TMH  
Community diabetes screenings  
Clinical dietitian at TMH

#### Gaps:

Education on diabetes equipment

### **Heart Disease**

#### Assets:

YMCA – exercise classes, prevention efforts  
Health fairs/screenings  
Stroke awareness efforts  
Strong cardiac and pulmonary rehab at TMH

### **Access to Mental Health Services**

#### Assets:

Crisis intervention/assessment of patients  
Tireless commitment to patients  
Senior Life Solutions  
Resources are a phone call away  
Veterans Court

#### Gaps:

Access to inpatient beds  
Pediatric services (outpatient)

### **Colo-rectal Cancer**

#### Assets:

Technology and access

Many local providers providing colonoscopy services at TMH

Availability of latest surgical scope technology

#### Gaps:

Adherence to screening guidelines is lacking

At the end of the assets and gaps discussion, a forced ranking was used to prioritize the top eight needs. The eight priorities were ranked on a scale from 1 to 10, with 1 being the least serious, on the impact of Triple Aim, magnitude, seriousness, and feasibility. After the results from the ranking were tallied, the External Advisory Group prioritized the top eight needs. The Advisory Group prioritized the needs in the order below:

1. Access to mental health services
2. Access to pediatric dental services
3. Heart disease
4. Lung cancer
5. Colorectal cancer
6. Obesity
7. Diabetes
8. Breast Cancer

#### **Final Priorities Selected**

1. Mental Health
2. Obesity
3. Pediatric Dental

### **Priorities Not Selected: Christian County**

Of these top needs ranked in priority by the External Advisory Group, these five were ultimately not selected:

1. Heart disease
2. Lung cancer
3. Colorectal cancer
4. Diabetes
5. Breast cancer

The reason these needs were not selected are as follows:

- Heart disease and diabetes were eliminated from further consideration because the advisory group members felt that efforts to improve treatment of obesity would also impact the incidence and morbidity of heart disease and diabetes.
- Lung cancer was not chosen because although it was ranked as a high priority by the advisory group, it was perceived by the advisory group that there would be little opportunity to make additional impact beyond what is already being done by the Christian County Health Department.

- Colon Cancer was not chosen because it consistently ranked as a lower priority among the advisory group members. The hospital currently offers advanced colonoscopy services, and annual colorectal cancer education for the community.
- Breast Cancer was not chosen because it was ranked as a lower priority among the advisory group members. Free mammograms are available to low income women who qualify for the Illinois Breast and Cervical Cancer program and the CUPS for the Cure fund at Taylorville Memorial Hospital is also available to off-set costs of mammography for other women.

## Final Selected Priorities

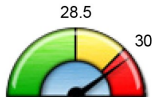
Images in the following section of the report are from Healthy Communities Institute data on Memorial Health System's website: [www.choosememorial.org/healthycommunities](http://www.choosememorial.org/healthycommunities), Community Dashboard for Christian County, retrieved September 8, 2015. Retrieved from <http://www.choosememorial.org/MHS-Community-Need-Assessment/HCI?hcn=CommunityDashboard>.

### OBESITY

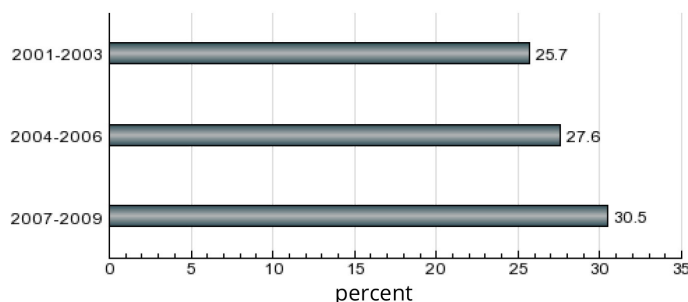
Obesity was ranked as high priority among the TMH Core Group and the TMH External Advisory Group.

## Adults who are Obese

This indicator shows the percentage of adults aged 18 and older who are obese according to the Body Mass Index (BMI). The BMI is calculated by taking a person's weight and dividing it by their height squared in metric units ( $BMI = \text{Weight (Kg)} / [\text{Height (m)}^2]$ ). A BMI  $\geq 30$  is considered obese.

County	Time Period	HP 2020 Target
 <p style="text-align: center;"><b>30.5</b> percent</p> <p style="text-align: center;"><b>Measurement</b> Period: 2007-2009</p>	<p style="font-size: 24pt; font-weight: bold;">County: Christian</p> <p style="color: red; text-decoration: underline;">View Every County</p> <p style="font-size: 10pt; color: red;">Data Source: Illinois Behavioral Risk Factor Surveillance System Categories: Health / Exercise, Nutrition, &amp; Weight Technical Note: The distribution is based on data from 101 Illinois counties. Maintained By: Healthy Communities Institute</p>	

Adults who are Obese : Time Series



### MHS Defined Criteria

- **Triple Aim**

*Improve health of individuals*

Obesity is largely associated with a higher risk for other serious medical conditions including hypertension, type 2 diabetes, coronary heart disease, stroke, hypercholesterolemia, arthritis, and asthma. Lowering the obesity rate in Christian County would likely lower the rate of other medical conditions, thus improving the health of individuals.

*Reduce waste, variation, and health-care costs*

The estimated annual health care costs of obesity-related illness are a staggering \$190.2 billion or nearly 21% of annual medical spending in the United States. Reducing obesity rates locally will certainly lower local healthcare costs. In addition to reducing healthcare costs, several studies point to indirect costs of obesity that have an economic impact, including

productivity and absenteeism in the labor market, as well as premature mortality, lower quality of life, and higher rates of disability.

*Improve health of population*

Obesity is largely associated with a higher risk for other serious medical conditions including hypertension, type 2 diabetes, coronary heart disease, stroke, hypercholesterolemia, arthritis, and asthma. Lowering the obesity rate in Christian County would likely lower the rate of other medical conditions, thus improving the health of the population.

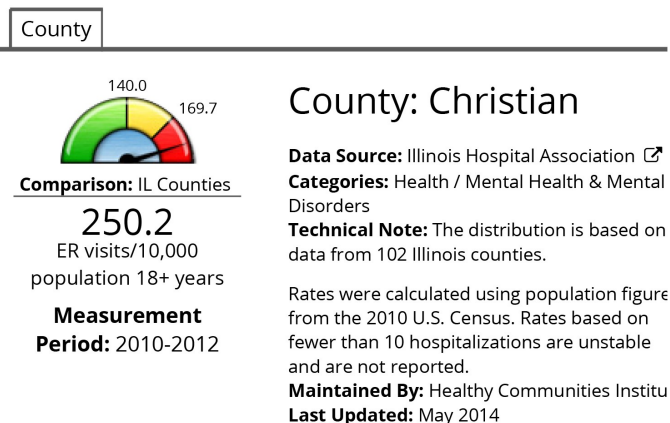
- Magnitude**  
This disparity is widespread. Nearly a third of Christian County adult residents (30.5%) are obese, according to the most recent Healthy Communities data.
- Seriousness**  
Considering that obesity has such impact on health and economic stability, and that such a large portion of residents are affected, obesity is considered a serious health concern.
- Feasibility**  
With support of the local healthcare community, and access to evidence based programs designed to lower obesity, the feasibility of making an impact in local obesity rates is strong.

**MENTAL HEALTH**

Mental Health was ranked as high priority among the TMH Core Group and the TMH External Advisory Group.

**Age-Adjusted ER Rate due to Mental Health**

This indicator shows the average annual age-adjusted emergency room visit rate due to mental health per 10,000 population aged 18 years and older.



- Triple Aim**  
*Improve health of individuals*  
Depression is a chronic disease that negatively affects a person's feelings, behaviors and thought processes. The Center for Medicare Services estimates that depression in older adults occurs in 25 % of those with other illnesses, including: arthritis, cancer, cardiovascular disease, chronic lung disease, and stroke. Even those with the most severe depression can improve with treatments including medications, psychotherapies, and other methods. Providing awareness, intervention, and access to mental health care would improve the mental health of the individuals in Christian County.

**Depression: Medicare Population**

**County: Christian**



**Comparison:** U.S. Counties

**18.3**  
percent

**Measurement Period:** 2012

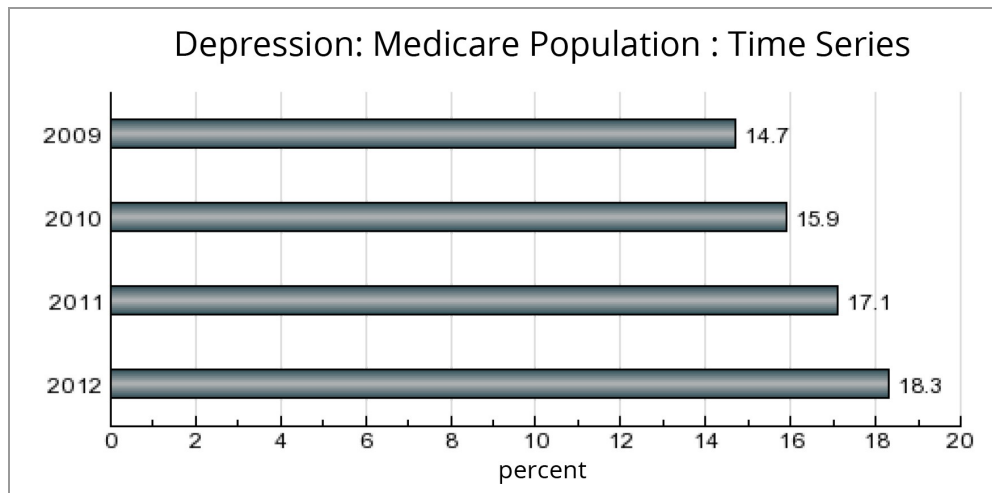
**Data Source:** Centers for Medicare & Medicaid Services

**Categories:** Health / Mental Health & Mental Disorders, Health / Older Adults & Aging

**Technical Note:** The distribution is based on data from 3,105 U.S. counties and county equivalents.

**Maintained By:** Healthy Communities Institute

**Last Updated:** June 2014



*Reduce waste, variation, and healthcare costs*

Many of the patients who cannot get access to care are forced to seek care outside of the county (if they can afford it) or resort to the Emergency Room.

Less residents suffering the effects of undiagnosed or untreated mental illness would likely result in savings on related healthcare costs, disability benefits, and lost earnings, thereby improving the local economic climate.

*Improve health of the population*

Depression is a chronic disease that negatively affects a person's feelings, behaviors and thought processes. The Center for Medicare Services estimates that depression in older adults occurs in 25% of those with other illnesses, including: arthritis, cancer, cardiovascular disease, chronic lung disease, and stroke. Even those with the most severe depression can improve with treatments including medications, psychotherapies, and other methods. Providing awareness, intervention, and access to mental health care would improve the mental health of the population of Christian County.

- **Magnitude**

According to Healthy Communities data, the rate of Medicare patients who are treated for depression continues to rise, and the knowledge that access is limited is telling that there may be additional residents suffering from mental illness but not seeking treatment. Additionally, reporting from members of CHNA advisory mem-



bers, high board days in the Emergency Room, the lengthy wait time to access psychiatric care and the lack of availability of psychiatric beds are telling of a problem that is of larger magnitude than this one study proves.

- **Seriousness**

According to National Alliance on Mental Illness, one in five adults experiences a mental health condition every year. One in 20 lives with a serious mental illness such as schizophrenia or bipolar disorder. In addition to the person directly experiencing by a mental illness, family, friends and communities are also affected. 50% of mental health conditions begin by age 14 and 75% of mental health conditions develop by age 24. The normal personality and behavior changes of adolescence may mimic or mask symptoms of a mental health condition. Early engagement and support are crucial to improving outcomes and increasing the promise of recovery.

- **Feasibility**

The willingness of other community agencies to work together to improve mental health awareness and services locally helps give Taylorville Memorial Hospital an opportunity to create an impactful improvement in mental health care in Christian County.

## PEDIATRIC DENTAL CARE

Pediatric Dental Care was ranked as high priority among the TMH Core Group and the TMH MHS Defined Criteria

- **Triple Aim**

*Improve health of individuals*

Oral health has been shown to impact overall health and well-being. In 2011-2012, 17.5% of children in the US ages 5-19 years old had untreated dental caries. Tooth decay is still the most common childhood disease and if left untreated, can lead to physical and psychological disabilities in children.

*Reduce waste, variation, and healthcare costs*

Reducing pediatric dental issues locally will certainly lower local healthcare costs. Statistics of untreated dental issues are significant but become even more noteworthy when the implications of untreated dental issues are examined. If tooth decay is not promptly taken care of, the decay can continue to the center of the tooth, called the pulp, where nerves and blood vessels supply the tooth. If decay reaches the center, the tooth can abscess, triggering the need for much more extensive, costly, and painful dental care.

*Improve health of the population*

Untreated tooth decay can also lead to gum disease, which may result in the destruction of the tissue that encases teeth, causing teeth to loosen. Gum disease may also be connected to other issues; the CDC states that recent studies link oral infections with conditions such as heart disease, stroke, and diabetes. Untreated dental issues are a serious problem that children and adults are suffering from. Access to pediatric dental care would give the children of Christian County the opportunity to live healthier lives that carry to adulthood.

- **Magnitude**  
Input from the CHNA External Advisory Committee documented widespread disparity in access to pediatric dental care services.
- **Seriousness**  
Considering that lack of access to pediatric dental care has such an impact on the health and well-being of the children of Christian County, it is considered a serious health concern.
- **Feasibility**  
Taylorville Memorial Hospital will conduct a feasibility study for exploration and possible solutions in regard to pediatric dental care. Community collaboration will be necessary to address the issue. Taylorville Memorial Hospital will take on the leadership role and will bring together area dentists, school officials, and others who can help in this process.

### **Memorial Health System Internal Advisory Committee**

On Jan. 30, 2015, the four hospitals of Memorial Health System (TMH, Memorial Medical Center, Abraham Lincoln Memorial Hospital and Passavant Area Hospital) met to consider the results of each hospital's CHNA process. The purpose of the meeting was to identify whether there were any shared priorities among the hospitals.

Even though the CHNAs were completed in four different counties with different community advisory groups, mental health and obesity were final priorities in Christian, Sangamon, Logan and Morgan counties. There was discussion about various ways the four hospitals might address the priorities as a health system. Because additional input was needed from content experts from all Memorial Health System affiliates, MHS convened an Obesity Task Force and Mental Health Task Force.

The MHS Obesity Task Force met on March 24, 2015, and included representatives from all four hospitals as well as Memorial Physician Services, Mental Health Centers of Central Illinois and Memorial Home Services.

Charter: Obesity has been selected by all four Memorial Health System hospitals as a priority during the 2015 community health need assessments. The Memorial Health System Obesity Task Force Group will offer perspective on community obesity issues being addressed by their affiliate organizations. They will identify opportunities to address gaps in services, both as a health system and as individual affiliates, for the communities they serve.

Following assessment of assets and gaps within Memorial Health System to address obesity within each community, and exploration of various opportunities to impact obesity for people living in Christian, Sangamon Logan and Morgan counties, the decision was made to expand Memorial Medical Center's Weight Loss and Wellness Center program to TMH and the other MHS affiliate hospitals. This program is based on the nationally recognized, evidence-based model of Geisinger Health System. Memorial's program includes a medical

(non-surgical) weight loss program; accredited bariatric surgery program; diabetes services; outpatient nutrition services; and fitness. It provides physicians a comprehensive resource to refer their patients to for individualized counseling and education. There is no other program offering this specialized approach in central Illinois. TMH's 2016 Implementation Strategy reflects this joint priority.

The MHS Mental Health Task Force met on April 13, 2015, and included representatives from all four hospitals as well as Memorial Physician Services, Mental Health Centers of Central Illinois and Memorial Home Services.

Charter: Mental Health has been selected by all four Memorial Health System hospitals as a priority during the 2015 community health need assessments. The Memorial Health System Mental Health Task Force Group will offer perspective on community obesity issues being addressed by their affiliate organizations. They will identify opportunities to address gaps in services, both as a health system and as individual affiliates, for the communities they serve.

The Task Force discussed a wide variety of mental health issues affecting people living in Christian, Sangamon Logan and Morgan counties. Community assets and gaps for mental health services were not identical in each county. One program that could benefit all counties is Mental Health First Aid. This national evidence-based program gives people the skills to help someone who is developing a mental health problem or experiencing a mental health crisis. Evidence shows that it builds mental health literacy by helping the public identify, understand, and respond to signs of mental illness. TMH's 2016 Implementation Strategy reflects this joint priority.

## **Community Health Need Assessment FY2016 Implementation Strategy**

The following pages contain Taylorville Memorial Hospital's FY2016 Implementation Strategy. It was approved by the hospital board on July 14, 2015. This Implementation Strategy will be updated for fiscal years 2017 and 2018.



## **TAYLORVILLE MEMORIAL HOSPITAL Community Health Need Assessment Implementation Strategy FY16 October 1, 2015 – September 30, 2016**

Memorial Health System is a not-for-profit healthcare organization located in central Illinois. It includes four hospitals: Memorial Medical Center in Sangamon County, Taylorville Memorial Hospital in Christian County, Abraham Lincoln Memorial Hospital in Logan County, and Passavant Area Hospital in Morgan County. Memorial Health System also includes Mental Health Centers of Central Illinois, Memorial Physician Services and Memorial Home Services.

Community health need assessments were completed in 2015 in each of the counties where the hospitals are located. These needs assessments meet the federal health reform's Section 9007 of the Patient Protection and Affordable Care Act of March 2010 and requirements of the IRS 990 Schedule H report.

### **Taylorville Memorial Hospital – Christian County, Illinois**

Taylorville Memorial Hospital (TMH) is a not-for-profit 25-bed rural critical access hospital located in Taylorville, Ill., approximately 27 miles southeast of the state capitol of Springfield. TMH is one of two hospitals in the primary service area of Christian County (pop. 34,298). The other, Pana Community Hospital, is a critical access facility in the southeast corner of the county. The majority of the patients served by TMH come from Christian County, where the hospital focuses the majority of our community outreach efforts and health improvement initiatives. Christian County's race/ethnicity includes 96.5% white, 1.6% black, and 1.9% other. The median household income is \$45,145. The county has an aging population: persons age 65 and older make up 18.2% of Christian County's population, vs. 13.5 % for the state of Illinois. 14.9% of all people live below the federal poverty level, including 24.8% of children and 7.9% of seniors. Christian County has nine medically underserved areas. In FY2014, 3.8% of the patients served at TMH received uninsured/underinsured charity care assistance; 18.1% of the patients were on Medicaid and 54.9% were covered by Medicare.

### **Identified Priority Health Needs**

The community health need assessment was carried out in conjunction with Christian County Health Department's IPLAN (Illinois Project for Local Assessment of Needs). IPLAN is required of public health departments by the Illinois Department of Public Health. During the 2015 community health need assessment process, the community identified the following priority health needs:

1. Access to mental health services
2. Access to pediatric dental services
3. Obesity
4. Heart disease

5. Lung Cancer
6. Colorectal cancer
7. Diabetes
8. Breast cancer

Memorial Health System hospitals used the following defined criteria to select final CHNA priorities:

- Triple Aim – improve individual or population health or reduce health care costs
- Magnitude – how many people are affected
- Seriousness – whether the issue contributes to death, disability
- Feasibility – whether we can do something about it

#### **Priorities Not Selected: Christian County**

- Heart disease and diabetes were eliminated from further consideration because the advisory group members felt that efforts to improve treatment of obesity would also impact the incidence and morbidity of heart disease and diabetes.
- Lung cancer was not chosen because, although it was ranked as a high priority by the advisory group, it was perceived by the advisory group that there would be little opportunity to make additional impact beyond what is already being done by the Christian County Health Department.
- Colon Cancer was not chosen because it consistently ranked as a lower priority among the advisory group members. The hospital currently offers advanced colonoscopy services, and annual colorectal cancer education for the community.
- Breast Cancer was not chosen because it was ranked as a lower priority among the advisory group members. Free mammograms are available to low income women who qualify for the Illinois Breast and Cervical Cancer program and the CUPS for the Cure fund at Taylorville Memorial Hospital is also available to off-set costs of mammography for other women.

#### **Final Selected Priorities: Christian County**

The external advisory group, including representatives from public health, social services organizations and those offering care underserved populations, as well as recommendations from the Memorial Health System Internal Advisory Team, three final priorities were selected:

1. Obesity
2. Mental Health
3. Pediatric dental care

## **FY2016 Implementation Strategy**

<b>PRIORITY:</b>	<b>OBESITY</b>
<b>Reasons for priority selection</b>	<p>Taylorville Memorial Hospital's 2015 community health need assessment identified obesity as a top priority through its data collection and analysis and community advisory group.</p> <p>30.5 percent of Christian County adults are obese. Source: Illinois Behavioral Risk Factor Surveillance System. The percentage has increased from 25.7 percent in 2001.</p>



	Healthy People 2020 reports a current percentage of 33.9 percent of persons aged 20 years and older were obese in 2005-2008. The Healthy People 2020 target is 30.5%.
--	---

**Objective 1: Conduct a feasibility study regarding the creation of the Memorial Weight Loss and Wellness Center (MWLWC) program in Christian County**

<b>Target Population</b>	Adults who are overweight who live in Christian County
<b>Goal</b>	Expand access to the Memorial Weight Loss and Wellness Center by developing strategy to implement the program at Taylorville Memorial Hospital in Christian County.

**Strategy Selected:**

Healthy People 2020 goals highlight the need for increased intervention by physicians with patients in the areas of nutrition and weight status (NWS).

- NWS-6.1: Increase the proportion of physician office visits made by patients with a diagnosis of cardiovascular disease, diabetes, or hyperlipidemia that include counseling or education related to diet and nutrition. (Baseline: 20.8 percent of physician visits in 2007; Target = 22.9 percent/10 percent improvement)
- NWS-6.2: Increase the proportion of physician office visits made by adult patients who are obese that include counseling or education related to weight reduction, nutrition or physical activity. (Baseline: 28.9 percent of physician visits in 2007; Target = 31.8 percent/10 percent improvement)

Memorial's Weight Loss and Wellness Center is based on the nationally recognized, evidence-based model of Geisinger Health System. Memorial's program includes a medical (non-surgical) weight loss program; accredited bariatric surgery program; diabetes services; outpatient nutrition services; and fitness. It provides physicians a comprehensive resource to refer their patients to for individualized counseling and education. There is no other program offering this specialized approach in central Illinois.

**Programs/resources hospital will commit:**

Taylorville Memorial Hospital will provide leadership to assess expansion of the program, the facility for the program, staffing, training and financial support.

**Collaborative partners:**

Memorial Medical Center, Springfield Clinic, Christian County YMCA

Activity	Timeline	Anticipated Results
1. TMH will collaborate with MWLWC to complete a feasibility study for MWLWC at TMH	Sept 2016	Decision will be made if MHS will develop MWLWC at TMH
<b>MEASURES:</b> What will we measure to know the program is making a difference?		
<b>Short term indicators &amp; source</b>	Decision is made if MHS will develop MWLWC at TMH.	
<b>Long term indicators &amp; source</b>	Action plan to implement obesity treatment strategy established (FY17)	

**Objective 2: Sponsor a Lose to Win program/challenge**

<b>Target Population</b>	Individuals who live in the Christian County area who are overweight
<b>Goal</b>	Reduce the obesity rate in Christian County

**Strategy Selected:**

The Healthy People 2020 national health target is to reduce the proportion of adults aged 20 and older who are obese to 30.5%. The percentage of obese adults is an indicator of the overall health and lifestyle of a community. Obesity increases the risk of many diseases and health conditions including heart disease, Type 2 diabetes, cancer, hypertension, stroke, liver and gallbladder disease, respiratory problems, and osteoarthritis. Losing weight and maintaining a healthy weight help to prevent and control these diseases.

Taylorville Memorial Hospital Memorial will host a community-wide weight loss incentive program. Three multi-week Lose to Win challenges are offered over the course of the year.

**Programs/resources hospital will commit:**

Taylorville Memorial Hospital will provide staffing, the facility for the program, program promotion and financial support.

Activity	Timeline	Anticipated Results
1. TMH will sponsor a Lose to Win program/challenge	Three sessions fall 2015- fall 2016	Increased awareness of healthy habits and the obesity epidemic in Christian County.
<b>MEASURES:</b> What will we measure to know the program is making a difference?		
<b>Short term indicators &amp; source</b>	Increased awareness of healthy habits for weight control/loss among participants via survey of engaged individuals. Weight loss of current program participants will be measured for each multi-week program.	
<b>Long term indicators &amp; source</b>	Increased awareness of healthy habits for weight control/loss among Christian County residents via survey of engaged participants.	

**Objective 3: Support the Girls on the Run of Central Illinois**

<b>Target Population</b>	Girls in grades 3-8 and their families in Christian County
<b>Goal</b>	The goal of the program is to unleash confidence through accomplishment while establishing a lifetime appreciation of health and fitness.

**Strategy Selected:**

Childhood obesity has both immediate and long-term health impacts. Children and adolescents who are obese are at greater risk for bone and joint problems, sleep apnea, and are more likely than normal weight peers to be teased and stigmatized which can lead to poor self-esteem. Overweight and obese youth are more likely than normal weight peers to be overweight or obese adults and are therefore at risk for the associated adult health problems, including heart disease, type 2 diabetes, stroke, several types of cancer, and osteoarthritis. Childhood obesity has more than tripled in the past thirty years. Healthy eating and regular physical activity can lower the risk of becoming obese.

Taylorville Memorial Hospital will support the Girls on the Run program, a transformational, physical activity based youth development program for girls in grades 3-8. The goal of the program is to unleash confidence through accomplishment while establishing a lifetime appreciation of health and fitness.

**Programs/resources hospital will commit:**

Taylorville Memorial Hospital will provide staff, education of staff, and financial support.

<b>Collaborative Partners:</b> Girls on the Run, Taylorville School District and other participating schools.		
<b>Activity</b>	<b>Timeline</b>	<b>Anticipated Results</b>
1. Monetary Donation	FY 2016	TMH's support will assist growth of Girls on the Run in Christian County.
2. Outreach to potential school and host sites in collaboration with Girls on the Run program representatives to identify new sites or opportunities for program growth.	FY 2016	Maintain participation in Christian County schools during the 2015-2016 school year.
<b>MEASURES:</b> What will we measure to know the program is making a difference?		
<b>Short term indicators &amp; source</b>	As a result of the Girls on the Run program season and 5k race event, 75% or more of GOTR participants and their families will report that the program positively impacted their attitude toward exercise. Measurement: Girls on the Run survey of participants and their families.	
<b>Long term indicators &amp; source</b>	Growth of the Girls on the Run program in Christian County to additional schools, as measured by Girls on the Run	

<b>PRIORITY:</b>	<b>MENTAL HEALTH</b>
<b>Reasons for priority selection</b>	<p>Mental Health was identified by the community as the top priority in the community health need assessment. Community data shows very high rates of emergency department utilization and hospitalization for both adult and pediatric populations.</p> <p>Healthy People 2020 goals for Mental Health &amp; Mental Disorders (MHMD)</p> <ul style="list-style-type: none"> <li>• MDHD-6 Increase the proportion of children with mental health problems who receive treatment</li> <li>• MDHD-9 Increase the proportion of adults with mental health disorders who receive treatment</li> <li>• MDHD-10 Increase the proportion of persons with co-occurring substance abuse and mental disorders who receive treatment for both disorders</li> </ul>

<b>Objective 1: Implement Mental Health First Aid training in Christian County.</b>	
<b>Target Population</b>	Community at large
<b>Goal</b>	Step in early to stop the trajectory of issues that lead to mental health issues and the need for psychiatric intervention by providing community education to improve mental health literacy, early identification, peer intervention, and referral of community members to available resources if needed.
<b>Strategy Selected:</b> Mental Health First Aid (MHFA) is an evidence-based program that offers a five-day intensive training session to community members to become certified MHFA trainers. These certified trainers in turn go out in the community to provide an eight-hour education session to community members such as teachers, police, first responders, churches, youth leaders and others to teach them how to identify	

mental health issues, how to refer people to resources, and encourage community support of those struggling with issues that may contribute to mental illness. The Substance Abuse and Mental Health Services Administration (SAMHSA), the federal agency that leads public health efforts to advance the behavioral health of the nation, endorses MHFA and recently established grant funding for MHFA as part of the President's initiative to increase access to mental health services. MHFA is on the National Registry of Evidence Based Practices (NREPP). All interventions on the registry have been independently assessed and rated for quality of research and readiness for dissemination. MHFA has been shown to increase understanding of mental health disorders, knowledge of available resources, and confidence in and likelihood to help an individual in distress.

**Programs/resources hospital will commit:**

Memorial Medical Center will commit funding to bring a trainer from the national program to Springfield to train up to 30 local community members. Memorial will provide the conference center, promotion of the event, and provide funding for an ongoing program coordinator and tracking of results. TMH will commit staff for the week-long training and support the promotion of the program in Christian County.

**Collaborative Partners:** TMH will collaborate with Mental Health Centers of Central Illinois, Memorial Medical Center, Abraham Lincoln Memorial Hospital, Passavant Area Hospital, SIU School of Medicine, local school districts, area social service providers and the University of Illinois Springfield.

Activity	Timeline	Anticipated Results
1. Reserve date and facility for Mental Health First Aid program.	12/2015	Date for Mental Health First Aid instructor training identified. Trainer and facility reserved.
2. Provide promotional materials to partners for potential individuals to become certified MHFA trainers.	By 6/2016	Partners will be aware of opportunity to receive MHFA instructor training.
3. Hold MHFA instructor training	By 9/2016	Complete training of up to 30 individuals in central Illinois to become certified MHFA instructors.
4. Promote the program to communities in Sangamon, Logan, Morgan and Christian counties and begin to schedule communication education events.	9/2016	Local school districts and community organizations will be aware of the availability of MHFA training events for the community by certified MHFA trainers.
5. Hold at minimum 1 MHFA community trainings by certified MHFA instructors in each of the communities.	9/2016	Increase number of individuals in each community trained as mental health first aiders.
<b>MEASURES:</b> What will we measure to know the program is making a difference?		
<b>Short term indicators &amp; source</b>	<ul style="list-style-type: none"> <li>• Number of individuals becoming certified trainers from MHS sponsored certification training</li> <li>• Number of MHS sponsored community training events</li> <li>• Number of community members trained as mental health first aiders</li> <li>• Source: MHFA data collection tool</li> </ul>	
<b>Long term indicators &amp; source</b>	<ul style="list-style-type: none"> <li>• Among instructors and first aiders, increases in: mental health literacy, awareness of available resources, and confidence in assisting individuals in distress</li> </ul>	

	<ul style="list-style-type: none"> <li>Source: Survey of community members trained as instructors and first aiders.</li> </ul>
--	--

<b>Objective 2: Sponsor Senior Life Solutions</b>		
<b>Target Population</b>	Medicare patients dealing with mental health issues such as anxiety and depression	
<b>Goal</b>	Provide participants of the program with mental health counseling and support, as well as coping mechanisms to better prepare them to adjust to the affects of anxiety and depression in the senior population	
<b>Strategy Selected:</b>		
<p>According to the National Comorbidity Survey of mental health disorders, people over the age of 60 have lower rates of depression than the general population — 10.7 percent in people over the age of 60. However, the rate in Christian County is 18.3%, as measured in 2012 by the Centers for Medicare and Medicaid Services. Additionally, CMMS estimates that depression in older adults occurs in 25 percent of those with other illnesses, including: arthritis, cancer, cardiovascular disease, chronic lung disease, and stroke.</p> <p>Taylorville Memorial Hospital’s Senior Life Solutions will provide group mental health therapy and support by developing individualized patient care plans and goals under the direction of a clinical psychiatrist. Group therapy will be provided with a multi-disciplinary approach supported by the Christian County Mental Health Association and the Taylorville Memorial Hospital clinical nursing team.</p>		
<b>Programs/resources hospital will commit:</b>		
Taylorville Memorial Hospital will provide staffing, the facility for the program, program promotion and financial support.		
<b>Collaborative partners:</b>		
Christian County Mental Health Association		
<b>Activity</b>	<b>Timeline</b>	<b>Anticipated Results</b>
1.TMH will sponsor Senior Life Solutions	FY 2016	Reduction depression or anxiety for seniors participating in the program
<b>MEASURES:</b> What will we measure to know the program is making a difference?		
<b>Short term indicators &amp; source</b>	Reduction in depression or anxiety as assessed by Senior Life Solutions’ staff and clinical psychiatrist	
<b>Long term indicators &amp; source</b>	The participants’ hospital readmission rate and the rate of return to the Emergency Department for mental health related reasons.	

<b>PRIORITY:</b>	<b>PEDIATRIC DENTAL CARE</b>
<b>Reasons for priority selection</b>	<p>Taylorville Memorial Hospital’s 2015 community health need assessment identified pediatric dental care as a top priority through its data collection and analysis and community advisory group.</p> <p>According to the 2015 data by County Health Rankings, the ratio of population to providers for Dentists in Christian County is 4287:1, compared to the Illinois average of 1453:1. The external advisory group which included representatives from</p>

	Christian County schools and the health department stressed the difficulty in Christian County for children to receive needed dental care services, especially for low income children.
--	---

**Objective 1: Assemble a pediatric work group, start dialog, and explore options regarding the creation of a pediatric dental program in Christian County**

<b>Target Population</b>	Children in need of dental care who live in Christian County
<b>Goal</b>	Increase the availability of pediatric dental care by developing a strategy to implement a pediatric dental program in Christian County

**Strategy Selected:**

Oral health has been shown to impact overall health and well-being. Tooth decay is the most prevalent chronic infectious disease affecting children in the U.S. and impacts more than a quarter of children ages 2 to 5 and more than half of children ages 12 to 15. Given serious health consequences, it is important to maintain good oral health. It is recommended that adults and children see a dentist on a regular basis.

Healthy People 2020 Oral Health (OH) Objectives Include:

OH-1 Reduce the proportion of children and adolescents who have dental caries experience in their primary or permanent teet.

OH-2 Reduce the proportion of children and adolescents with untreated dental decay.

OH-7 Increase the proportion of children, adolescents and adults who used the oral health care system in the past year.

Taylorville Memorial Hospital will assemble a pediatric work group consisting of TMH staff, local dentists, school officials, and the Christian County Department of Public Health staff to explore options regarding the creation of a pediatric dental program in Christian County. This work group will specifically start a dialog on the feasibility of providing transportation of school children to local dentist offices.

**Programs/resources hospital will commit:**

Taylorville Memorial Hospital will provide leadership and organization of the pediatric dental work group and provide the meeting space for this group.

**Collaborative partners:**

Christian County Department of Public Health, Taylorville Community School District, local dentists

<b>Activity</b>	<b>Timeline</b>	<b>Anticipated Results</b>
1. Taylorville Memorial Hospital will assemble a pediatric dental work group to begin the dialog and explore options on starting a pediatric dental program in Christian County	Sept 2016	Decision will be made on the feasibility of a pediatric dental work group in Christian County, specifically transporting school children to local dentist offices.

**MEASURES:** What will we measure to know the program is making a difference?

<b>Short term indicators &amp; source</b>	Decision is made if it is feasible to begin a pediatric dental program in Christian County
<b>Long term indicators &amp; source</b>	Action plan to implement pediatric dental program is established (FY17)

Approved by TMH Board of Directors July 14, 2015.